

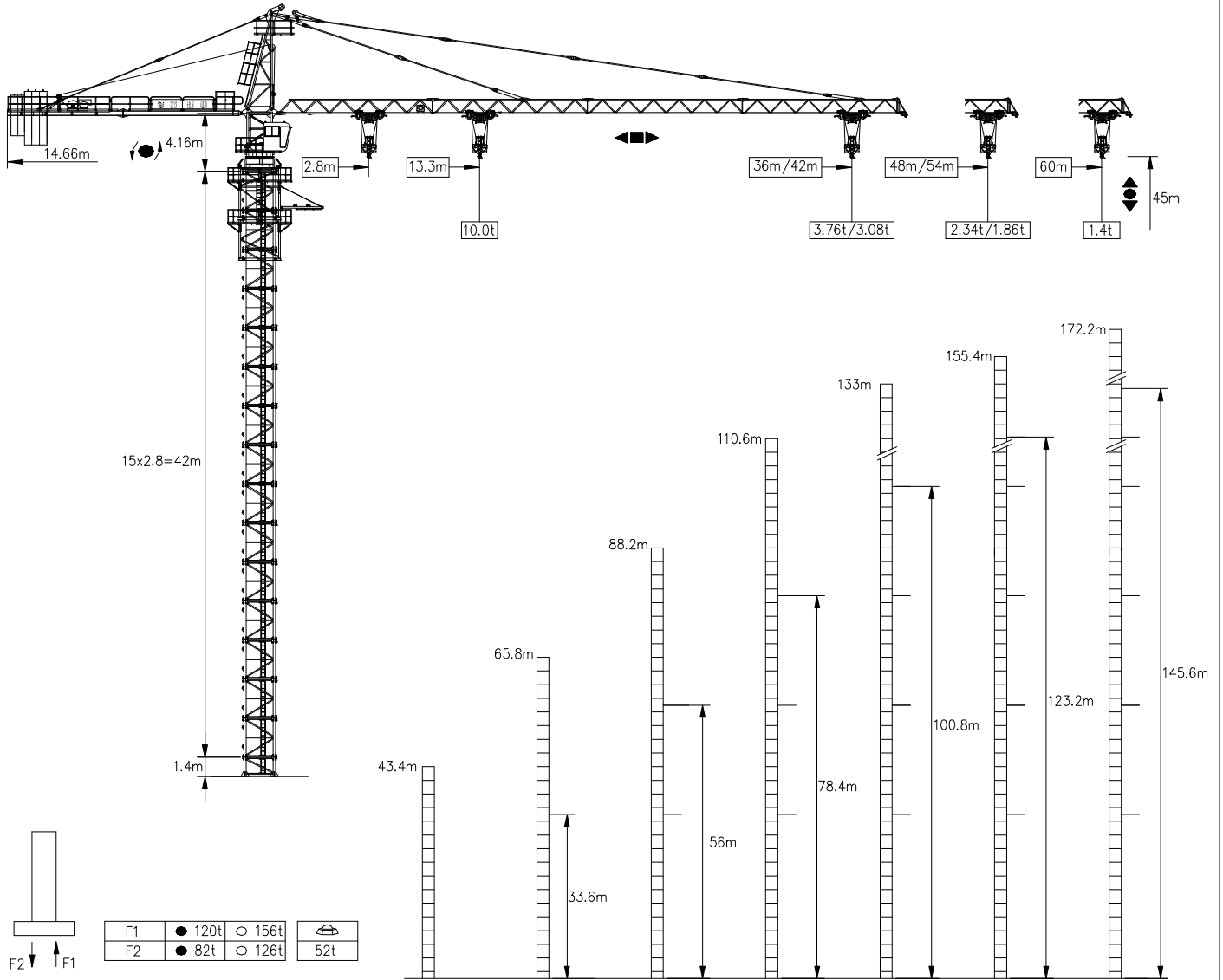


# Tower Crane QTZ125B(TC6015)

## TC6015B

## 10t

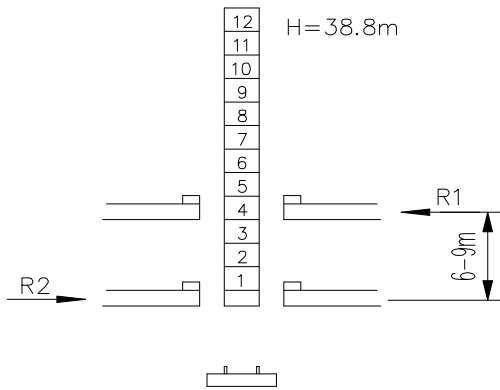
DEYING®  
德英



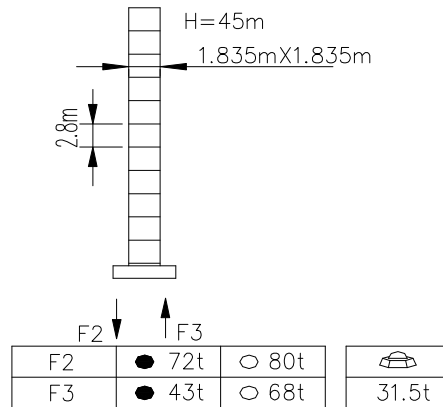
F1	● 120t	○ 156t	☰ 52t
F2	● 82t	○ 126t	

F 反力	Reaction	● 工作状态	in service	☰ 自重	without load and ballast with the longest jib and maximum height
		○ 非工作状态	out of service		

### 内爬式 Internal climbing



### 固定式 Stationary



P	R1	R2
30	18.8t	16.8t
	32.5t	

F2	● 72t	○ 80t	
F3	● 43t	○ 68t	31.5t

## Load Capacity

# 载荷特性 Load Capacity

#### 起重臂 jib (60m)

R (m)	2.8-13.3	16	18	20	24	25	28	30	32	35	38	40	42	45	48	50	52	54	58	60
Q (t)	10.00	8.00	6.96	6.13	4.91	4.66	4.04	3.70	3.41	3.02	2.71	2.52	2.35	2.13	1.94	1.82	1.71	1.62	1.44	1.40
Q (t)	5.00					4.73	4.11	3.77	3.48	3.09	2.78	2.59	2.42	2.20	2.01	1.89	1.78	1.69	1.51	1.50

#### 起重臂 jib (54m)

R (m)	2.8-14.50	15	18	20	22	26	28	30	32	35	38	40	42	45	48	50	52	54
Q (t)	10.00	9.58	7.47	6.81	6.08	4.79	4.52	4.15	3.82	3.41	3.06	2.85	2.67	2.43	2.21	2.09	1.97	1.86
Q (t)	5.00						4.59	4.22	3.89	3.48	3.13	2.92	2.74	2.50	2.28	2.16	2.04	1.93

#### 起重臂 jib (48m)

R (m)	2.8-15.00	16	20	22	24	26	28	30	32	34	36	38	40	42	45	48
Q (t)	10.00	9.28	7.13	6.36	5.73	5.20	4.75	4.36	4.00	3.72	3.45	3.22	3.01	2.81	2.56	2.34
Q (t)	5.00						4.82	4.43	4.07	3.79	3.52	3.29	3.08	2.88	2.63	2.41

#### 起重臂 jib (42m 36m)

R (m)	2.8-16.00	18	20	22	25	28	30	32	36	38	40	42
Q (t)	10.00	8.72	7.70	6.88	5.91	5.15	4.73	4.37	3.76	3.51	3.28	3.08
Q (t)	5.00						4.80	4.44	3.83	3.58	3.35	3.15

## I. Main Technical Parameter

Item		Unit	Parameter			
Metric lifting moment		KN.M	1280			
Max. lifting capacity		T	10			
Tip load capacity		T	1.5			
Working radius		M	2.8~60			
Hoisting Height	Independent	M	50			
	Attachment	M	174			
Hoisting Speed	Fall		2		4	
	Hoisting Speed	M/min	0~40	0~80	0~20	0~40
	Max Lifting Capacity	T	4.0	2.0	8.0	4.0
Slewing Speed		R/min	0~0.6			
Trolleying Speed		M/min	45/23/6			
Climbing Speed		M/min	0.56			
Weight	Independent Structure	T	52.0			
	Counter-Balance	T	19.2			
	Stationary Structure	T				
Max. Slewing Radius		M	60			
Counter-Jib Slewing Radius		M	14.66			
Max. Working Wind Speed		M/s	20			
Climbing Wind Speed ≤		M/s	13			
Working Environment Temperature		°C	-20~+40			

## II. Tower Crane Electronic Parts

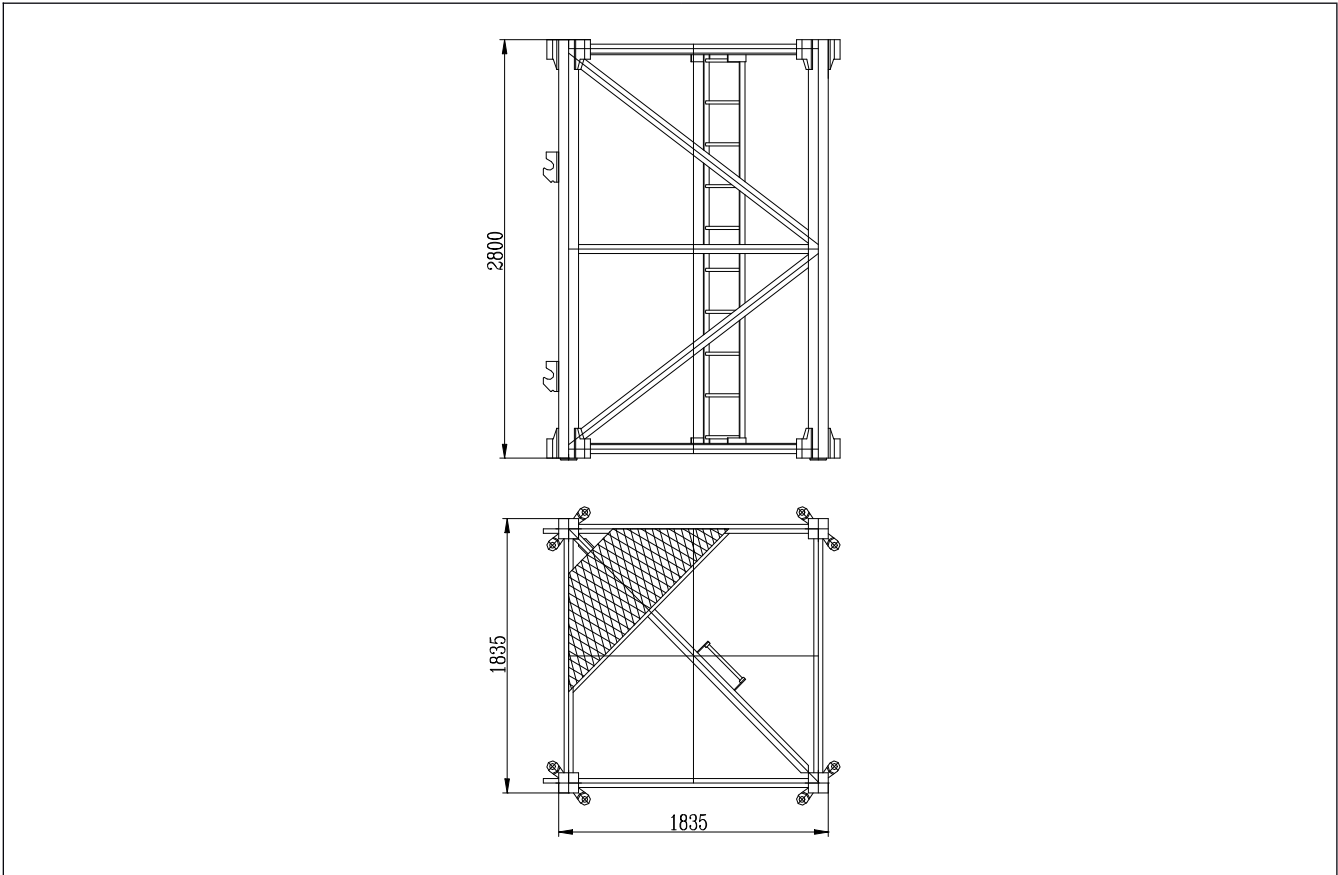
Creepage recloser	Breaker	Plastic shell breaker	Main AC contactor	Schneider electric
Relay	Time relay	Medium relay	Bridge unit	
Transducer	Moment spacing swish	autotransformer	Coder feekback	
DC power su	Kenotron	Avail adapter so	Retainer adapter	

pply		cket		
------	--	------	--	--

### III. Main Parts Parameter

Item			parameter	
Hoisting mechanism	Electromotor	Model		YZRDW250L-4/8-37/37
		Power	Kw	37
		Turning rate	R/min	1460/730/150
	Brake	Model		YWZ-315/90
		Braking moment	N.m	630
		Hydraulic braking		Hydraulic braking
	Reducer	Model		JD630
		Speed Ratio		i=17.6
Steel rope			14NAT6X19W	
Slewing mechanism	Electromotor	Model		YZR132M <sub>1</sub> -6
		Power	Kw	2×4.0 (2x75)
		Turning rate	R/min	975
	Reducer	Model		XX4-80.195C
		Speed Ratio		195
	Brake		Moment Brake	
	Slewing ring bearing		011.45.1400.001	
Trolleying mechanism	Electromotor	Model		YLEW112M-6
		Power	Kw	60
		Turning rate	R/min	700/1410
	Reducer	Model		SX308
		Speed Ratio		i=33.66
	Steel rope			8NAT6X19W
Hydraulic climbing mechanism	Electromotor	Model		M2QA132M4A
		Power	Kw	7.5
		Turning rate	R/min	1440
	Hydraulic pump	Cylinder model		TQY80
		Route of travel	mm	1600
	Discharge of Hydraulic pump		L/min	14.4
	Working Pressure		MPa	28

#### IV. Main Metal Parts List



Mast Section	External Dimensions 1835×1835 Overall Height:2800
Main Chord ∠12x135x135mm	



Jib	<p>Total 9 Sections Jib section connected through pin</p> <p>Tie-in of jib is processed after forging and it has small diastema and the jib has good rigidity.</p>
-----	--

